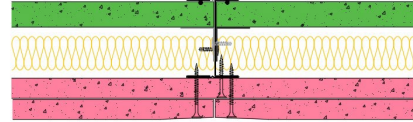


SE60-K-62(25) - SPEEDLINE System Data Sheet - Version V1 (24-10-23)

SPEEDLINE 60mm 'I' Stud Shaft Encasement
@600mm Ctrs, with 2x Knauf 15mm Fire Panel,
Knauf 19mm Coreboard, 25mm APR



System Performance Breakdown

Fire Resistance:

BS476 Part 22:1987:

Test Ref & Date or Applied Ref & Report:

Max Height:

Thickness:

Duty Grade: BS 5234: Part 2:1992:

Sound Insulation:

120/120 FromShaftSideOnly Minutes (Integrity/Insulation).

BMT/FEP/F14105 - BRE Report P102396-1012B

Refer to Speedline Specification Clause

92 mm. (At Base Track, Excluding Finishes)

Severe - Annexes A-F

47 R_wdB, Date Tested or Assessed Against -

TESTED AT ONE OF THE UKAS
ACCREDITED LABORATORIES
BELOW

B.T.C
(H-Ref on Graph)



B.R.E



AIRO



S.R.L

